

86 Brook Street, London W1

Well Fitted Out Mayfair Office

Lower Ground Floor - 1,628 sq ft (151 m²)



Description

- Air conditioning
- Excellent natural light
- Fitted out
- Furniture could be made available by separate arrangement
- Existing 100Mb broadband contract could be assigned
- Smart reception with commissionaire
- Showers and changing facilities
- Bicycle racks

86 Brook Street, W1

Location

The building is prominently located on the corner of Brook Street and Binney Street, a few metres away from Grosvenor Square. Bond Street Underground station is situated a short walk away, providing access to the Central and Jubilee lines, plus the Elizabeth line when this comes into operation.

Description

The available accommodation is located on the lower ground floor (1,628 sq ft) and is accessed via stairs or passenger lift directly from a high quality, manned reception.

The accommodation is fitted out to provide a large meeting room, a smaller meeting room, reception area, single office and open plan space with a demised kitchen & WCs.

Bicycle racks, showers and changing facilities are available to all tenants.

Lease

A new lease is available direct from the landlord.

Rent

£49.50 per sq ft per annum exclusive.

Rates

Estimated for 2017/18 to be £24.52 per sq ft.

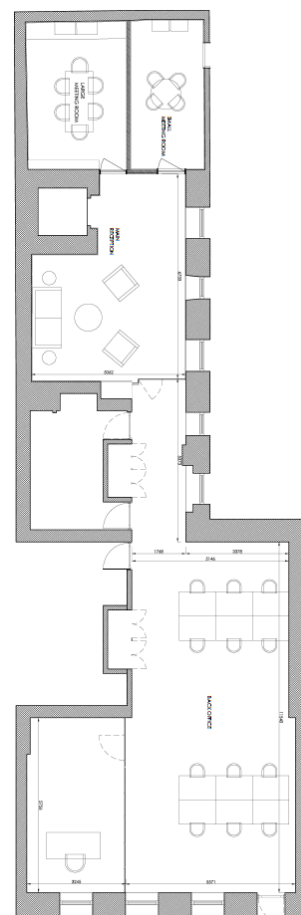
Interested parties are encouraged to make their own enquiries directly with Westminster City Council.

Service Charge

TBC

Energy Performance

TBC



For further information or to arrange a viewing please contact the sole agents:

Crossland Otter Hunt

Phil Frenay
phil@coh.eu

Jessica Petrie
jessica@coh.eu

01/18

020 7408 1114 www.coh.eu